

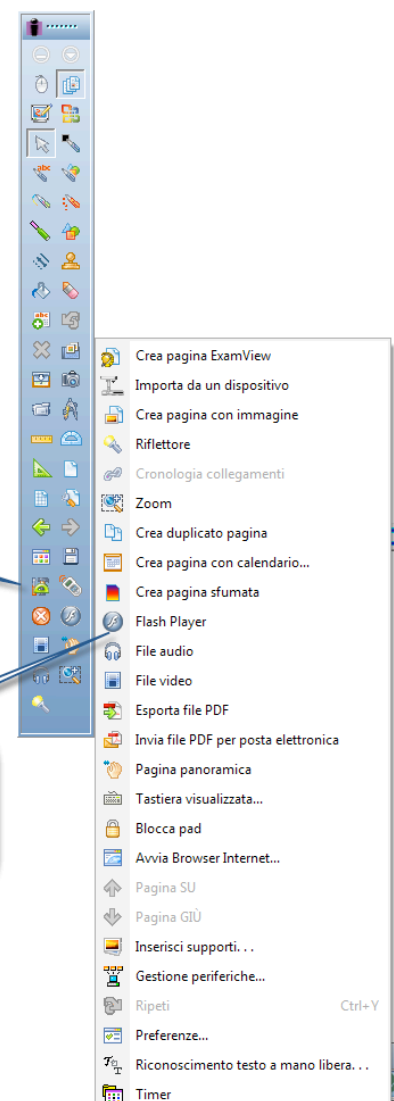
Come inserire un oggetto Flash .swf



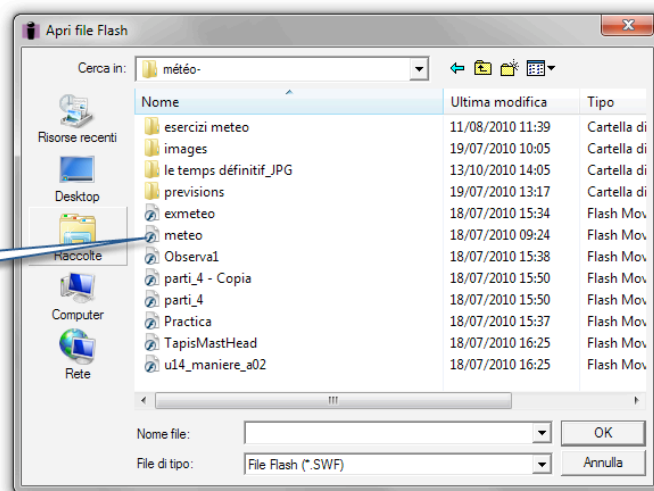


1. Clicca su casella degli strumenti per accedere agli strumenti

2. Scegliere Flash Player



Scegliere il file swf  
che vuoi inserire

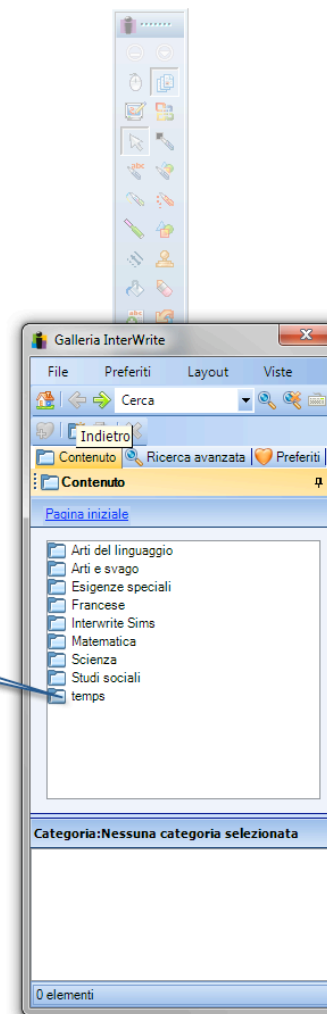


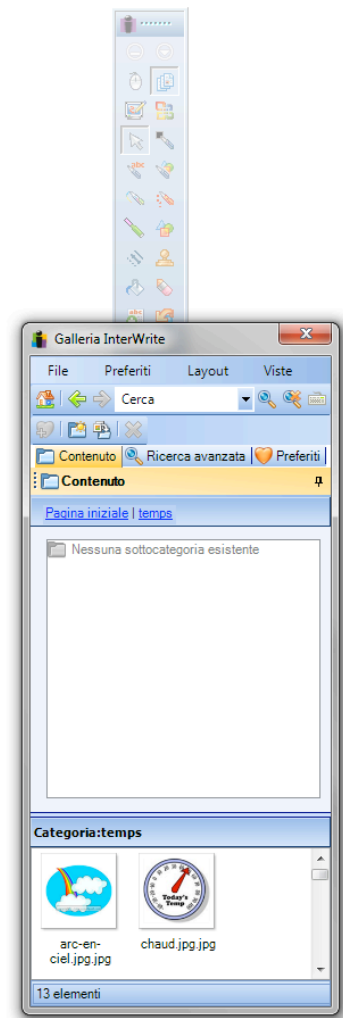
Un metodo alternativo  
sta nell'inserire il file  
nella galleria  
anche per ritrovarlo  
più facilmente in seguito.  
Clicca su galleria  
sulla barra principale





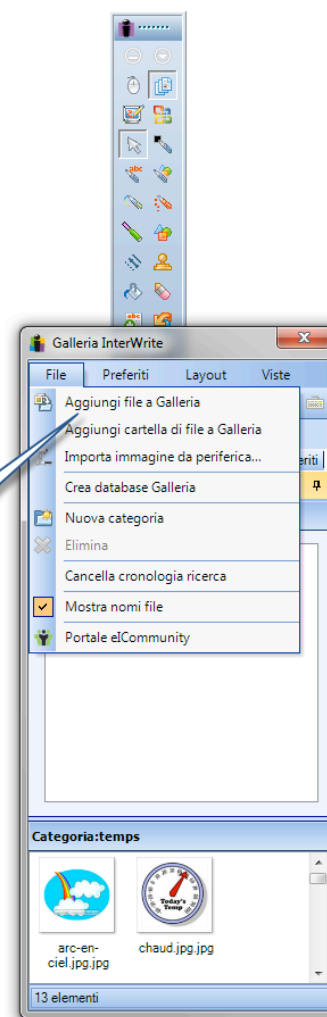
Clicca per aprire una cartella  
esistente,  
oppure crea una nuova categoria.  
Qui clicco sulla categoria: temps



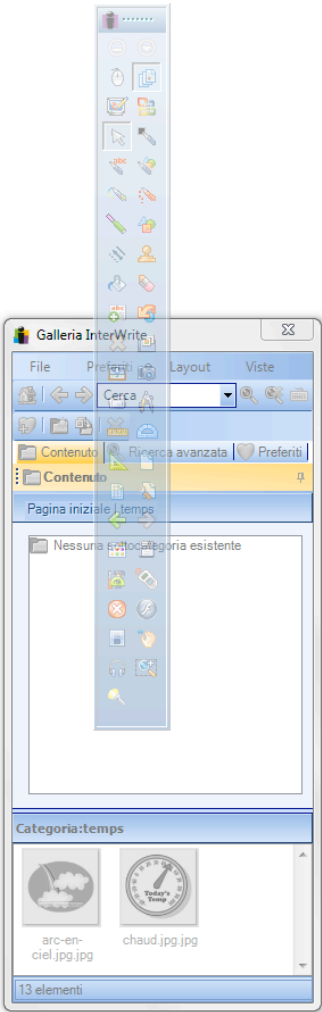
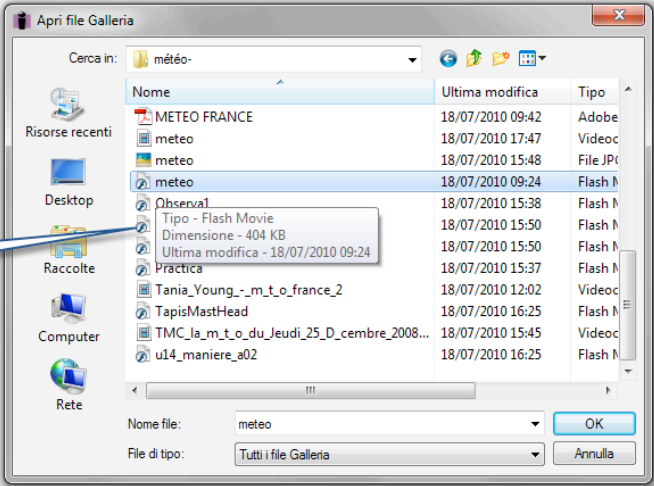




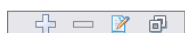
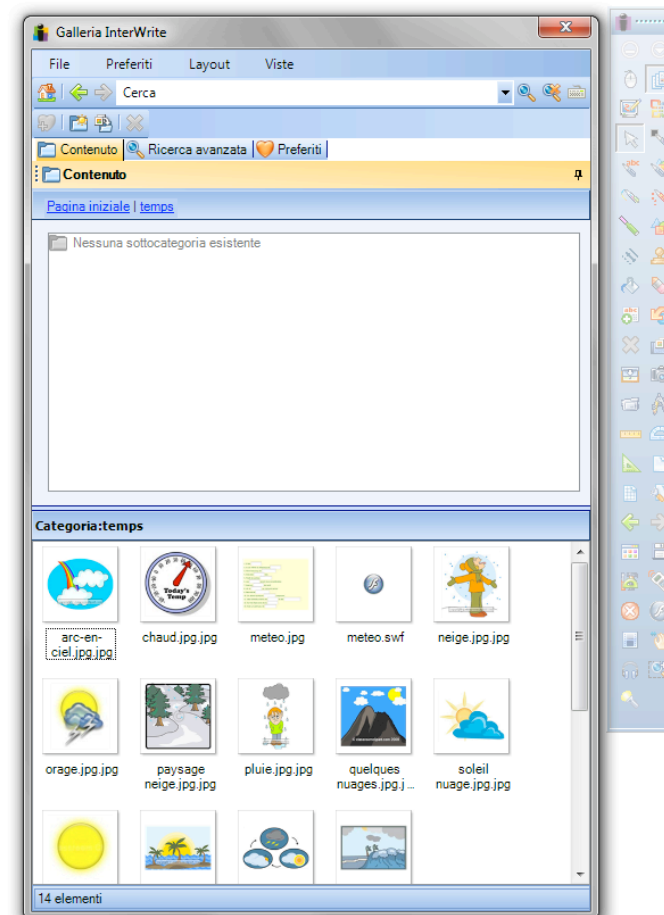
Clicca su  
Aggiungi file a galleria



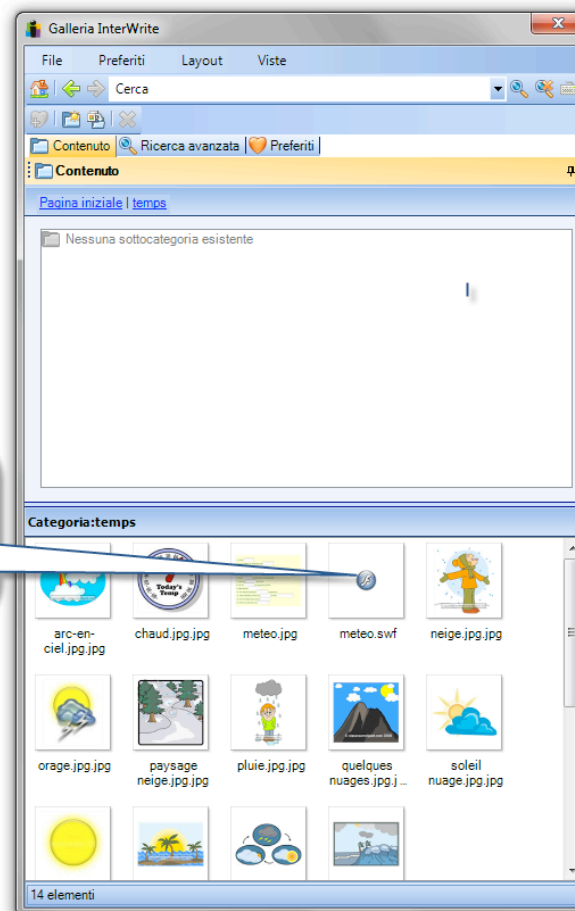
Scegliere il file che vuoi inserire nella galleria.

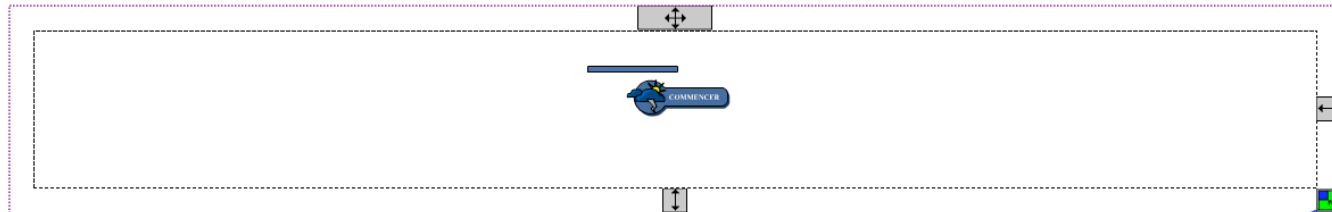






L'oggetto è stato inserito in galleria.  
basta trascinarlo sulla lavagna  
per inserirlo nella lezione



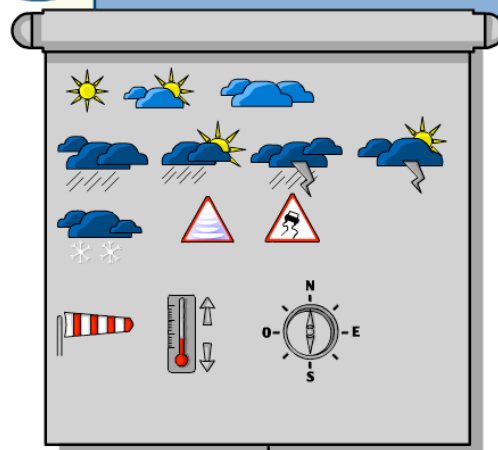



Se l'oggetto si inserisce  
in dimensioni ridotte  
puoi ingrandirlo  
agendo sull'angolo  
in basso a destra





## LEXIQUE DE LA METEO



Cliquez sur les symboles pour avoir les définitions. Vous pouvez alors avoir la prononciation des phrases en cliquant sur 

Ecco l'oggetto ingrandito.

